

What does my municipal tax pay?

Tax Rate = 1.00 mill

Example:

Assessed value is \$100,000 Township Tax = \$100.

Assessed value is \$200,000 Township Tax = \$200.

Average Residence in Manchester Township is assessed at \$170,335.

Assessed at \$170.34 in municipal taxes

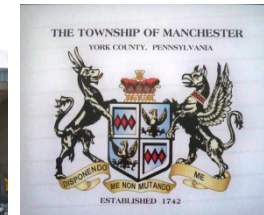
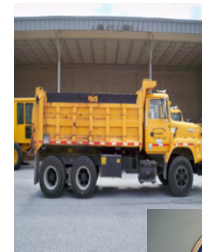


POLICE SERVICE

For over 8,680 incidents per year in Manchester Township - including the busiest intersection in York County (I-83/US Route 30)

FULL-TIME FIREFIGHTERS / EMT & AMBULANCE SERVICE

1375 incidents per year for fire
1729 ambulance calls



PUBLIC WORKS DEPARTMENT

89.72 miles of street/roads are maintained to a safe standard

STREET SWEEPING SNOW / ICE Removal

TRAFFIC SIGNAL MAINTENANCE

18 Signalized Intersections

Curb Side: TRASH COLLECTION & RECYCLING SERVICES

Equivalent to \$156.38 per collection point

LARGE ITEM PICK-UP YARD WASTE COLLECTION



RECREATION

Maintenance of 157 acres of Parks

Including

19 fields / stage / 10 pavilions

safe multi-purpose walking trails

6 tennis courts / 5 basketball courts

indoor multi-purpose room

2 recreation buildings available for rent

Playground equipment

Summer Fun Festival

Summer Entertainment Series

OTHER MISCELLANEOUS SERVICES:

Satelite Library

Animal Enforcement & Housing